

Stock Data

Number of Shares Authorized	300,000,000 shares
Number of Shares Issued	135,466,488 shares
Number of Shareholders	14,864

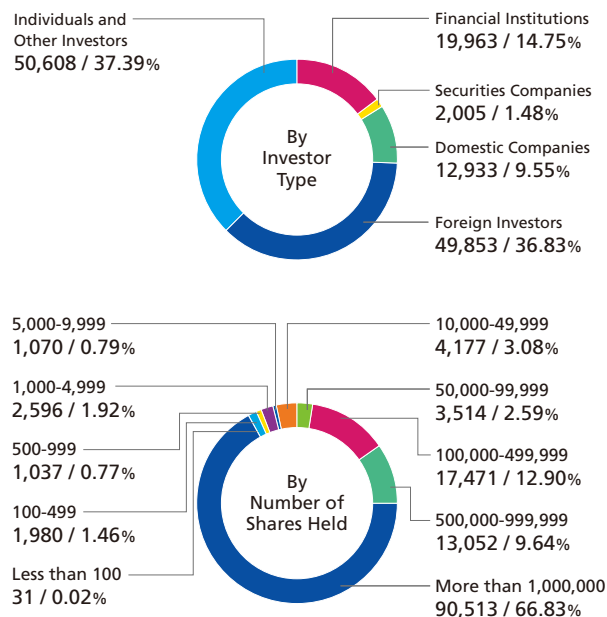
Major Shareholders (Top 10)

Major Shareholders	Number of Shares Held (in thousands)	Percentage of Shareholding (%)
Crossroad Co., Ltd.	10,682	10.01
The Master Trust Bank of Japan, Ltd. (Trust Account)	4,301	4.03
Japan Trustee Services Bank, Ltd. (Trust Account)	4,089	3.83
Yoshiyuki Tsujimoto	4,038	3.78
Kenzo Tsujimoto	4,019	3.77
JPMC Oppenheimer Jasdec Lending Account	3,488	3.27
Haruhiro Tsujimoto	3,099	2.90
Ryozo Tsujimoto	3,091	2.90
BNYM as AGT/Clients 10 percent	2,248	2.11
State Street Bank and Trust Company 505001	2,138	2.00

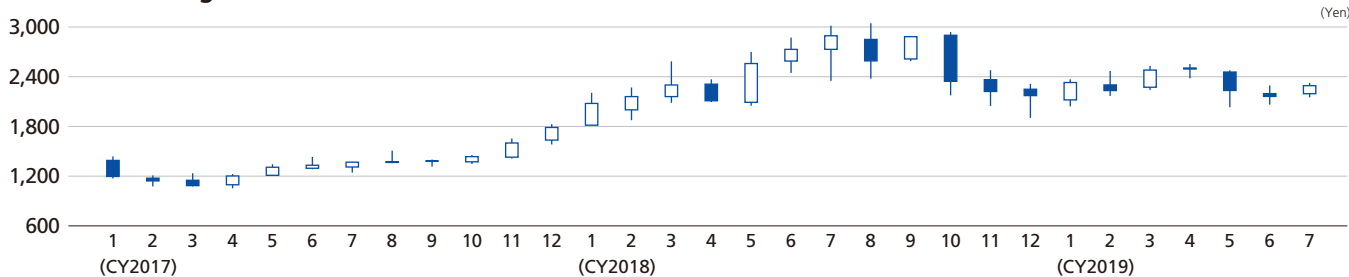
Note: Capcom owns 28,695 thousand shares as treasury stocks.
The stocks owned by the company are excluded from the above list.

Shareholders' Breakdown

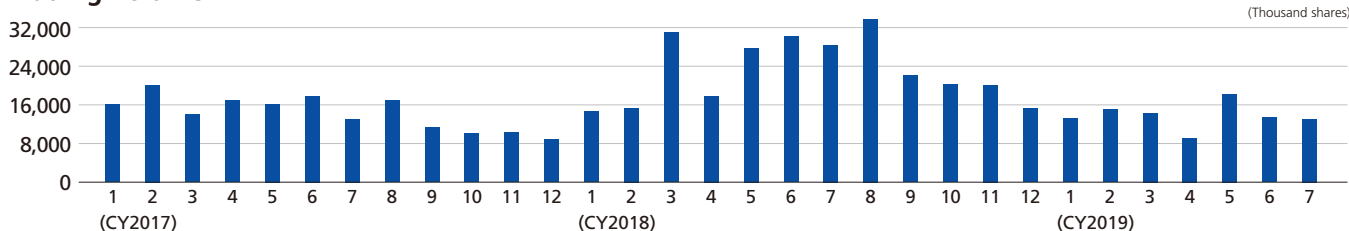
Number of shares held (in thousands) / (%)



Stock Price Range*



Trading Volume*



11-Year Trend of Stock Price and Trading Volume

	2009	2010	2011	2012	2013	2014	2015	2016	2017	2018	2019
Stock Price	873.0	883.0	795.0	945.5	738.0	979.0	1,194.5	1,372.5	1,085.5	2,299.0	2,480.0
High	1,820.0	1,005.0	953.5	1,155.5	979.5	1,165.0	1,206.5	1,537.5	1,438.5	2,585.0	3,045.0
Low	737.5	648.5	572.5	736.5	625.0	698.0	770.5	972.0	963.5	1,053.0	1,903.0
Trading Volume	179,636,900	181,065,800	149,613,900	227,386,800	178,008,200	150,408,300	143,234,700	162,642,100	183,455,500	182,341,200	258,438,800

* Effective April 1, 2018, Capcom implemented a stock split of two shares for every share. Stock prices prior to this date have been calculated assuming the stock split.

(Years Ended March 31)